



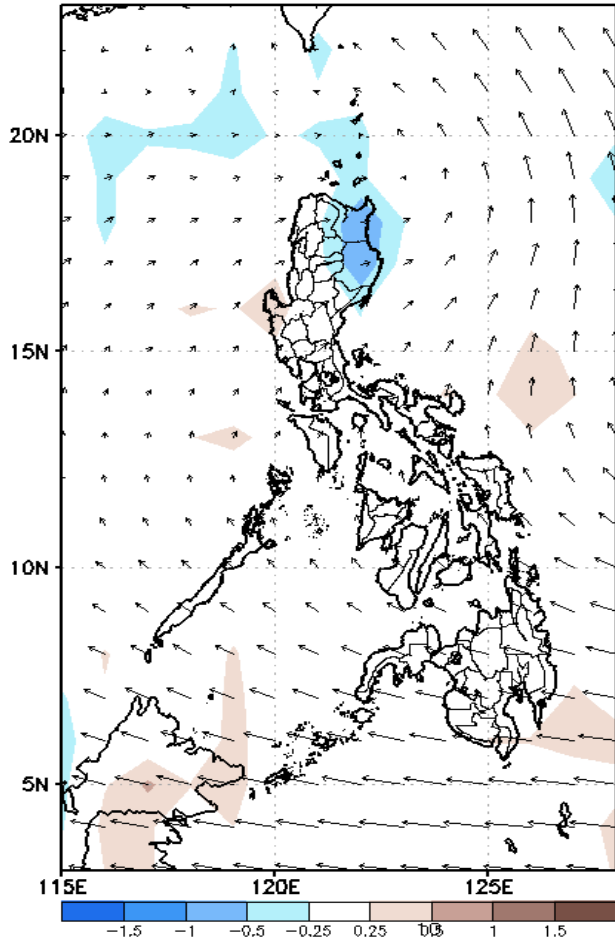
Week 1 & Week 2 Forecast for the Philippines using GEFS Model



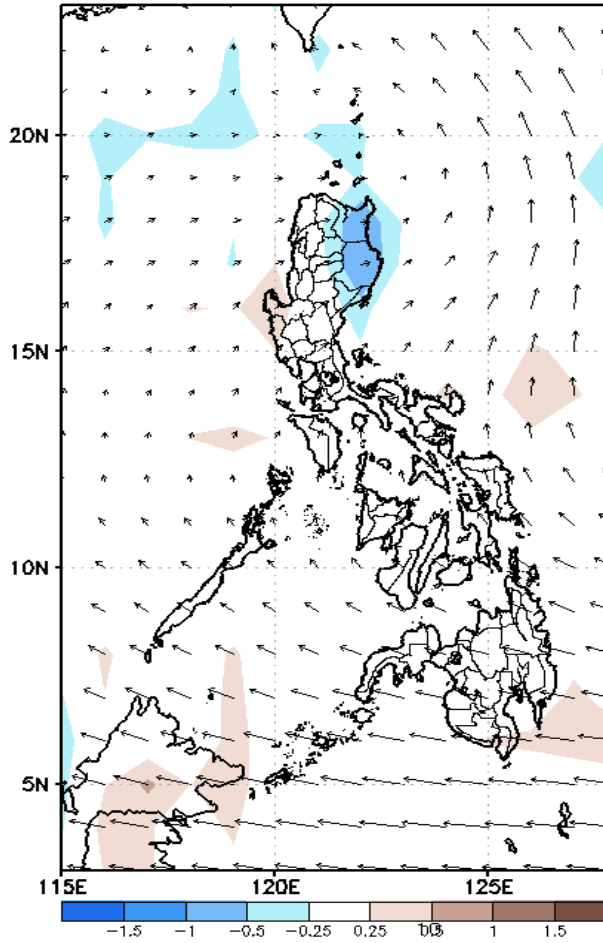
GEFS Week-1 Forecasts: Wind Anomaly Forecast

Week 1: : Aug 22-28, 2022

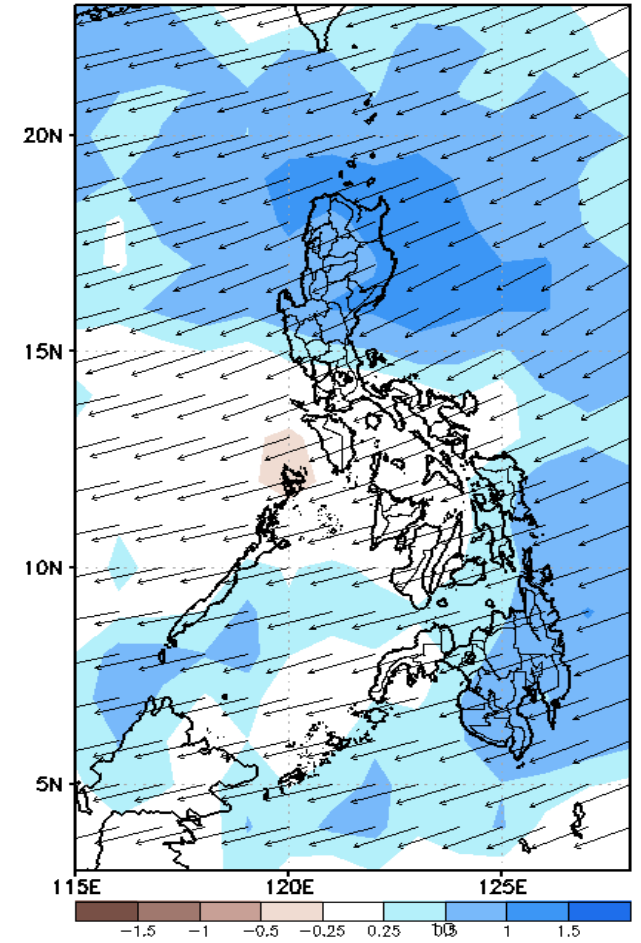
GEFS Week-1 850-hPa Divergence and Wind Anomr
Valid: 20220822 - 20220828



GEFS Week-1 700-hPa Divergence and Wind Anomr
Valid: 20220822 - 20220828



GEFS Week-1 200-hPa Divergence and Wind Anomr
Valid: 20220822 - 20220828



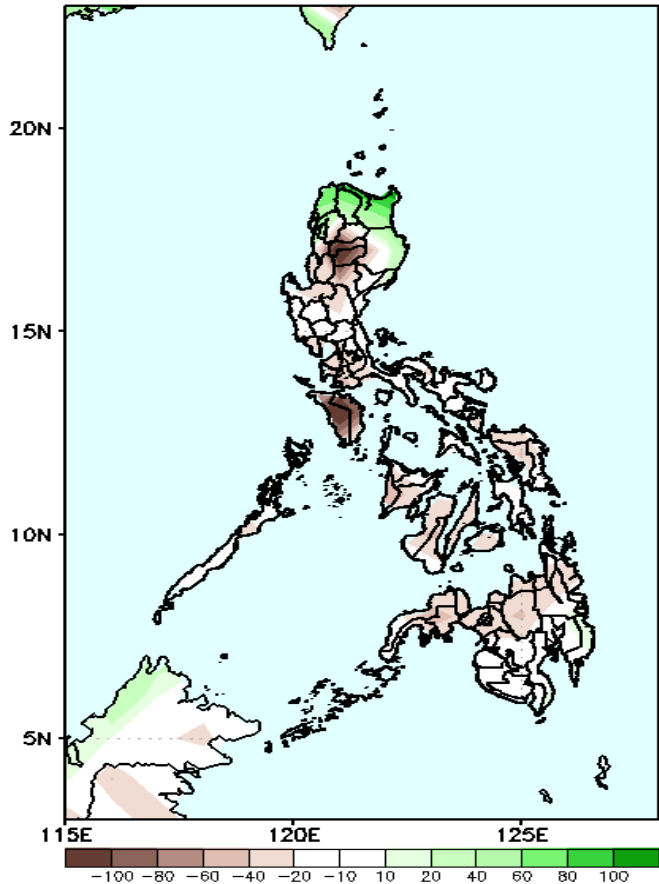
Southwest Monsoon affecting the western section of Northern and Central Luzon while Easterlies affecting the rest of the country during the forecast period.



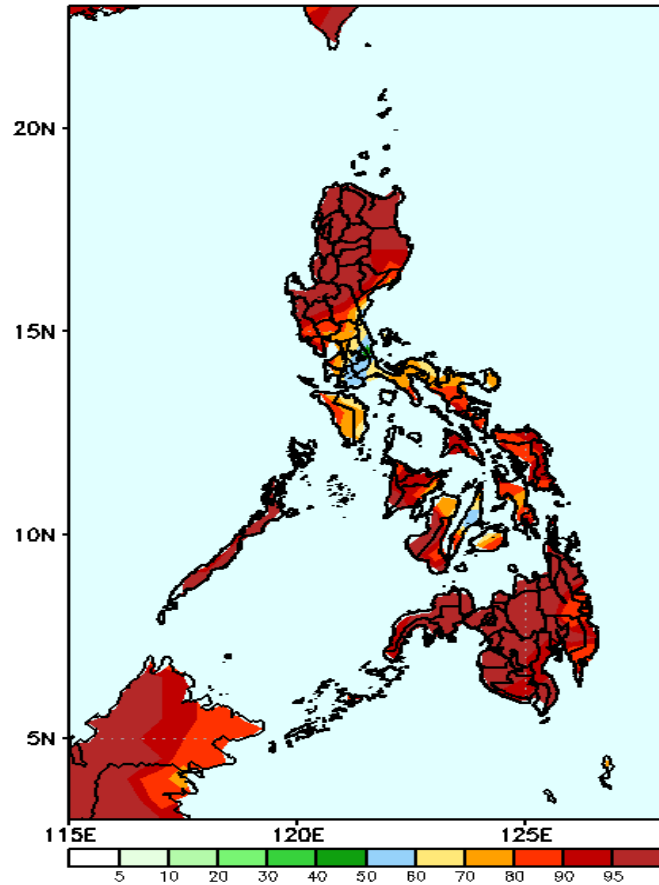
Precipitation Anomaly and Exceedance Probability > 25/50 mm

Week 1: : Aug 22-28, 2022

GEFS Week-1 Precip Anomaly
Valid: 20220822 - 20220828

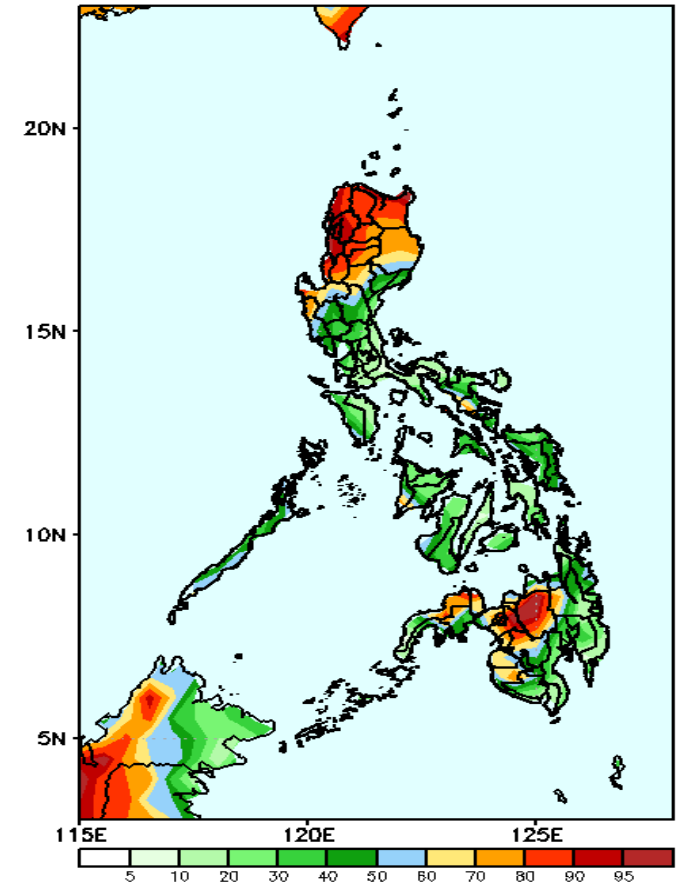


GEFS Week-1 Exceedance Prob. > 25mm
Valid: 20220822 - 20220828



High probability of rainfall to exceed 25mm in most parts of the country during the forecast period.

GEFS Week-1 Exceedance Prob. > 50mm
Valid: 20220822 - 20220828



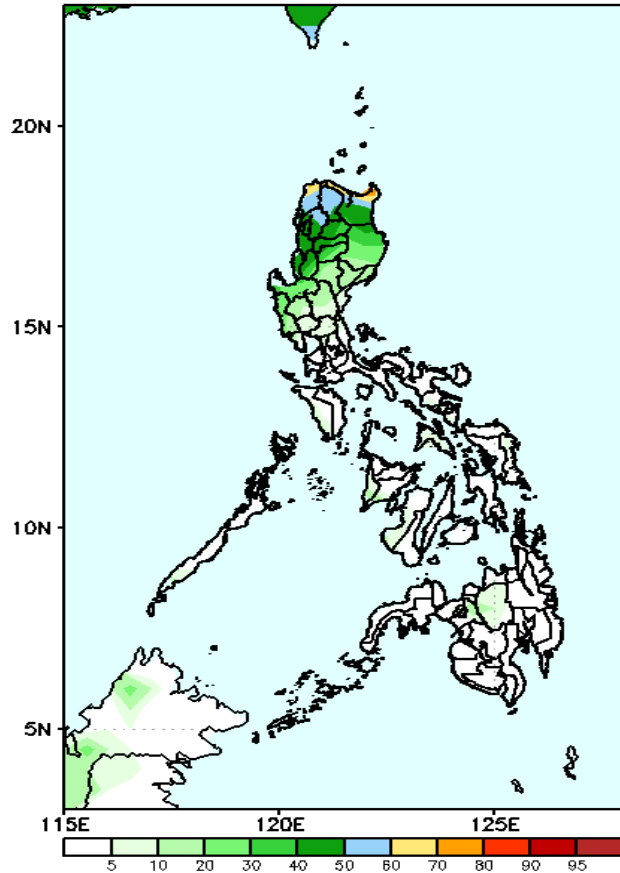
High probability of rainfall to exceed 50mm in most parts of Ilocos & Cordillera Region, Nueva Viscaya, northern & eastern Mindanao while less likely for the rest of the country during the forecast period.

Rainfall deficit of more than 100mm is expected in Mt. Province, Ifugao and Mindoro and 10-40mm for the rest of the country (except in Ilocos Norte, Apayao, Cagayan & eastern Isabela with 40-80mm increase of rainfall during he forecast period.

Exceedance Probability > 100/150/200 mm

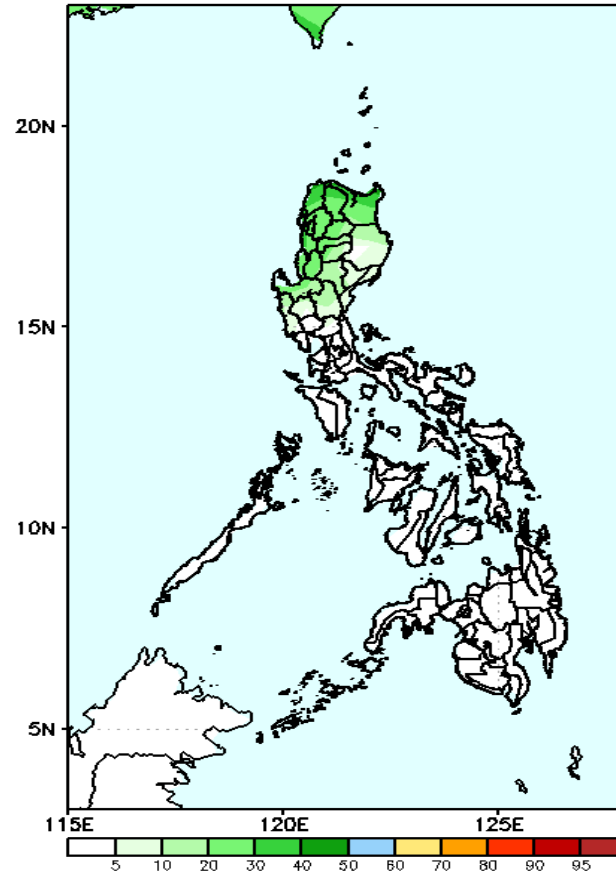
Week 1 : Aug 22-28, 2022

GEFS Week-1 Exceedance Prob. > 100mm
Valid: 20220822 - 20220828



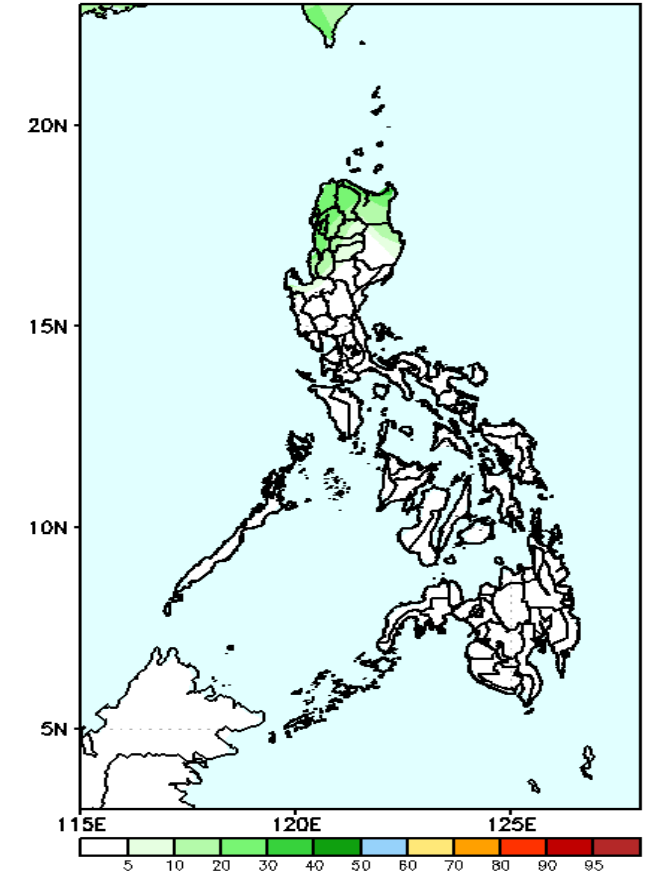
50-75% probability of rainfall to exceed 100mm in northern Luzon while less likely for the rest of the country during the forecast period.

GEFS Week-1 Exceedance Prob. > 150mm
Valid: 20220822 - 20220828



Low probability of rainfall to exceed 150mm in most parts of the country during the forecast period.

GEFS Week-1 Exceedance Prob. > 200mm
Valid: 20220822 - 20220828

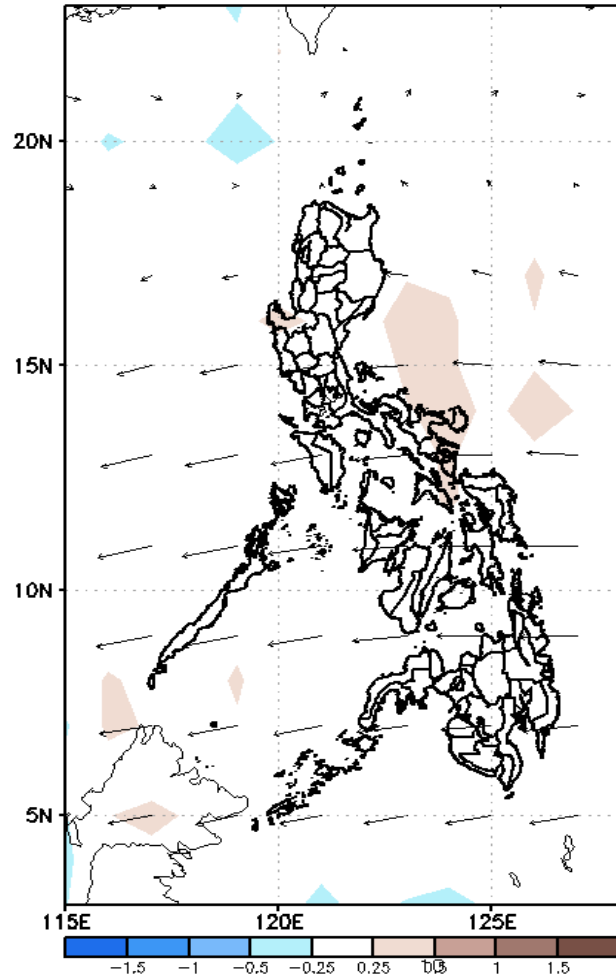


Low probability of rainfall to exceed 200mm in most parts of the country during the forecast period.

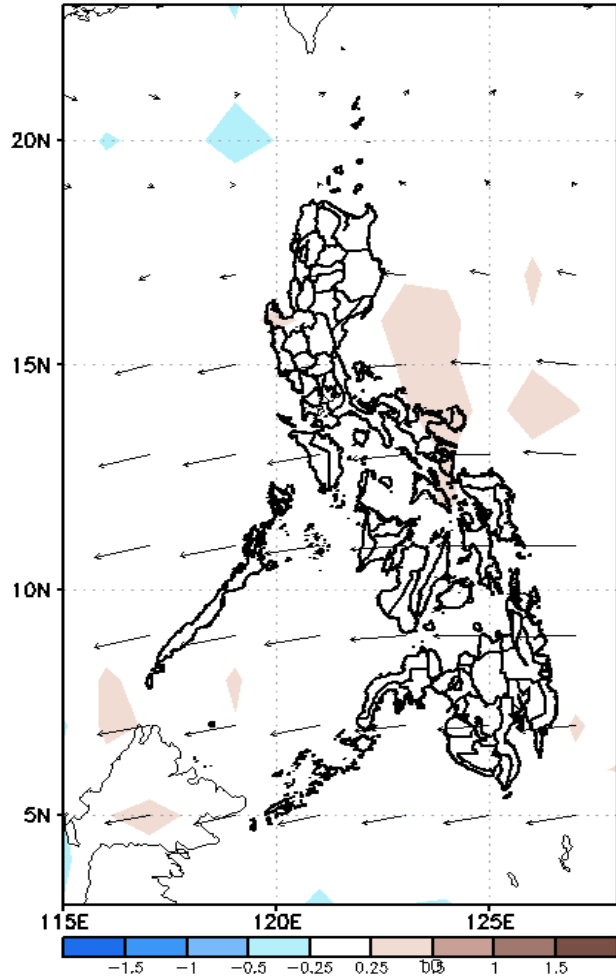
GEFS Week-2 Forecasts: Wind Anomaly Forecast

Week 2: Aug 29- Sep 04, 2022

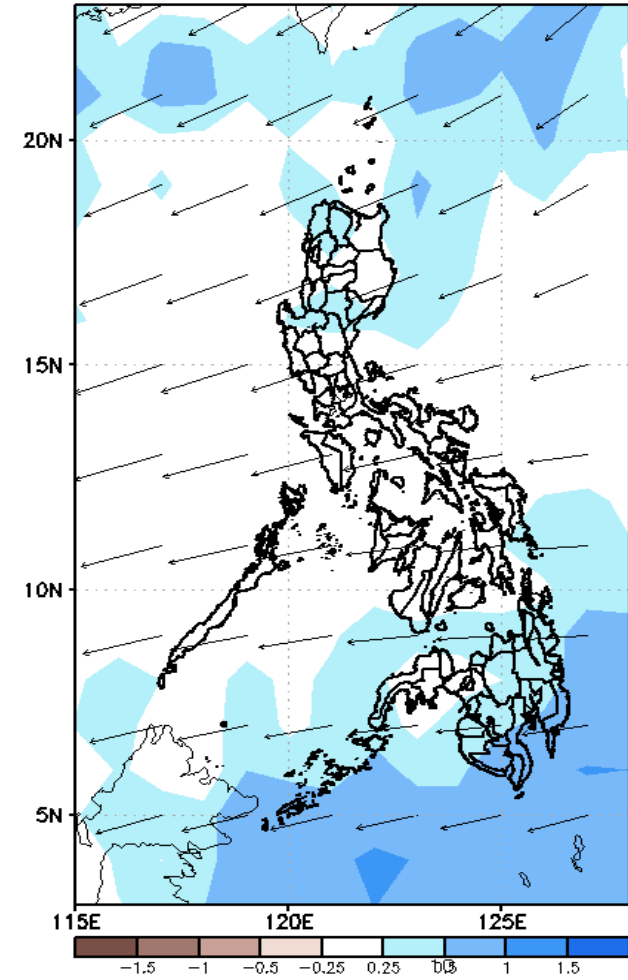
GEFS Week-2 850-hPa Divergence and Wind Anom
Valid: 20220829 - 20220904



GEFS Week-2 700-hPa Divergence and Wind Anom
Valid: 20220829 - 20220904



GEFS week-2 200-hPa Divergence and Wind Anom
Valid: 20220829 - 20220904



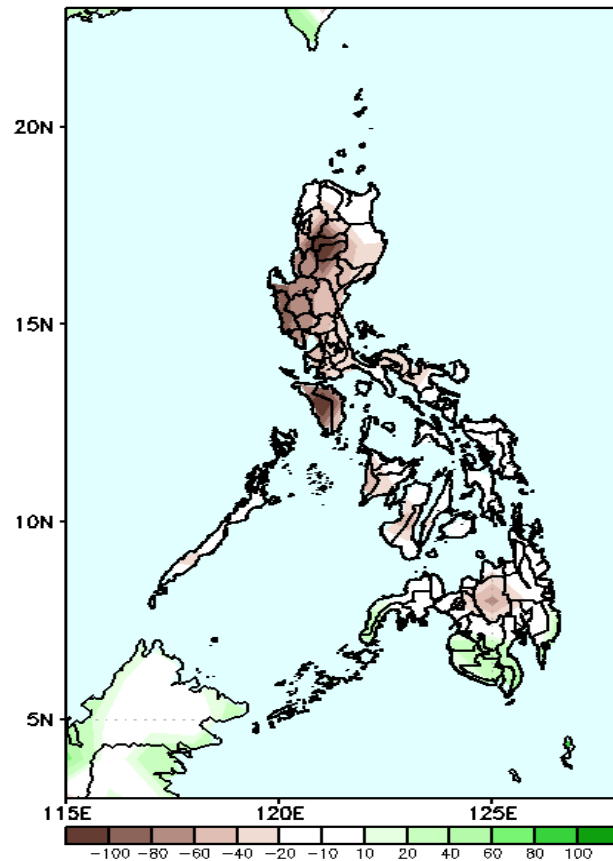
Southwest Monsoon affecting Extreme Northern Luzon while Easterlies affecting the rest of the country during the forecast period.



Precipitation Anomaly and Exceedance Probability > 25/50 mm

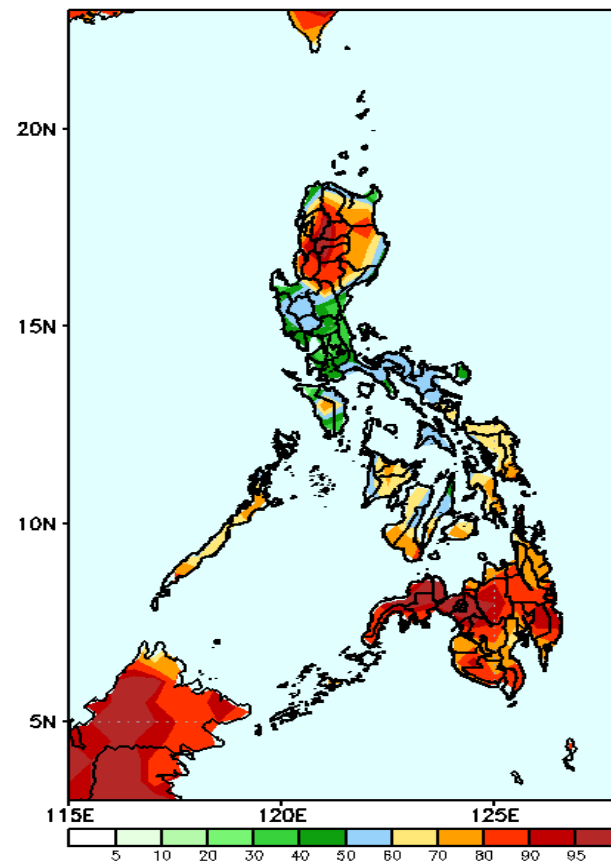
Week 2: Aug 29- Sep 04, 2022

GEFS Week-2 Precip Anomaly
Valid: 20220829 - 20220904



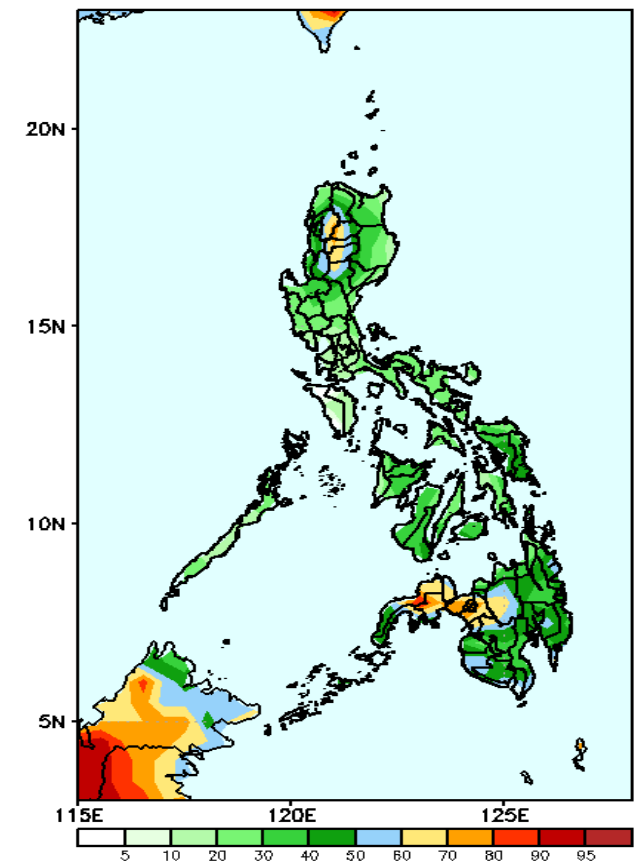
Rainfall deficit of more than 100mm is expected in Mt. Province, Ifugao and Mindoro and 10-40mm for the rest of the country during the forecast period.

GEFS Week-2 Exceedance Prob. > 25mm
Valid: 20220829 - 20220904



High probability of rainfall to exceed 25mm in most parts of the country except in some areas in Southern Luzon during the forecast period.

GEFS Week-2 Exceedance Prob. > 50mm
Valid: 20220829 - 20220904



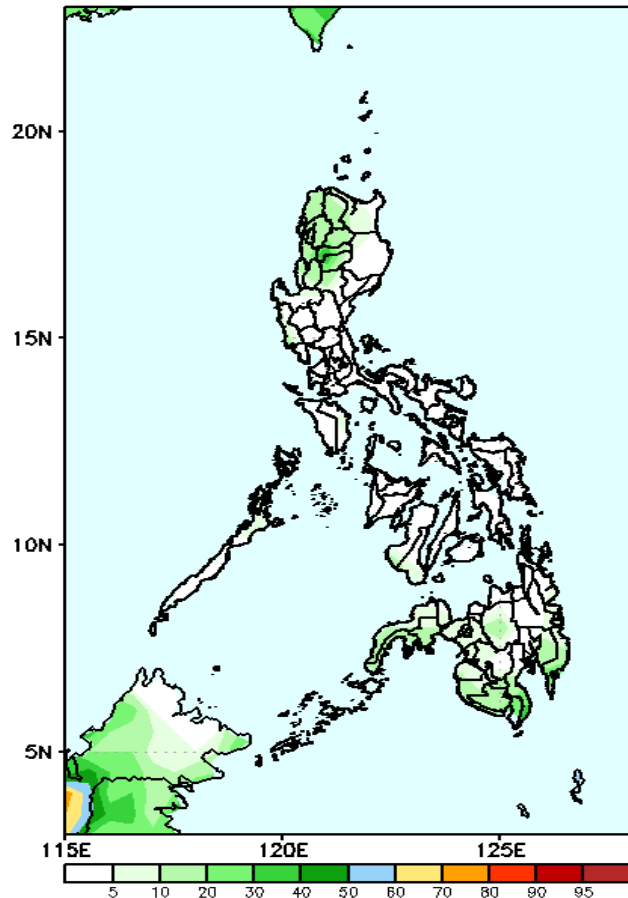
60-85% probability of rainfall to exceed 50mm in Cordillera Region and northwestern parts of Mindanao while less likely for the rest of the country during the forecast period.



Exceedance Probability > 100/150/200 mm

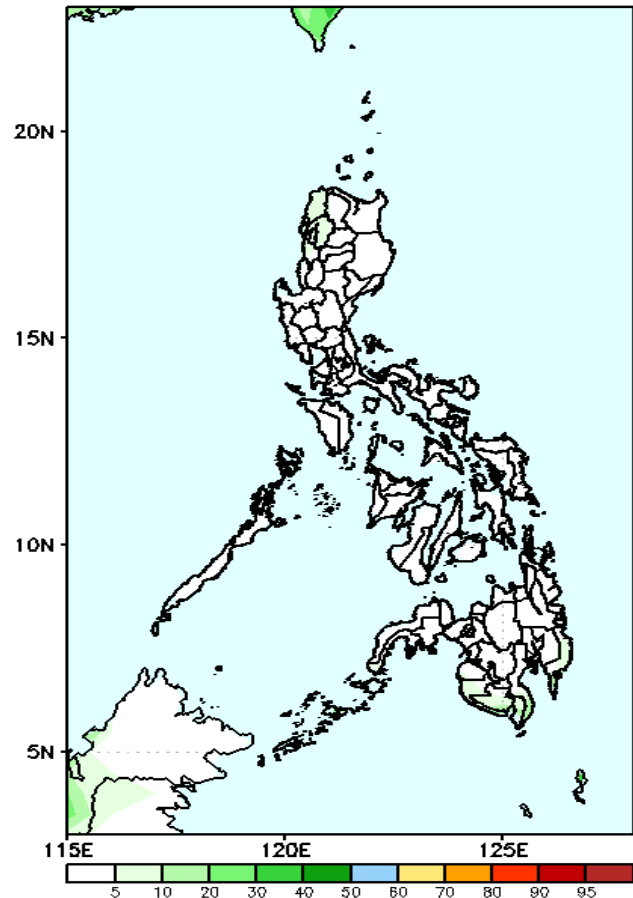
Week 2: Aug 29- Sep 04, 2022

GEFS Week-2 Exceedance Prob. > 100mm
Valid: 20220829 - 20220904



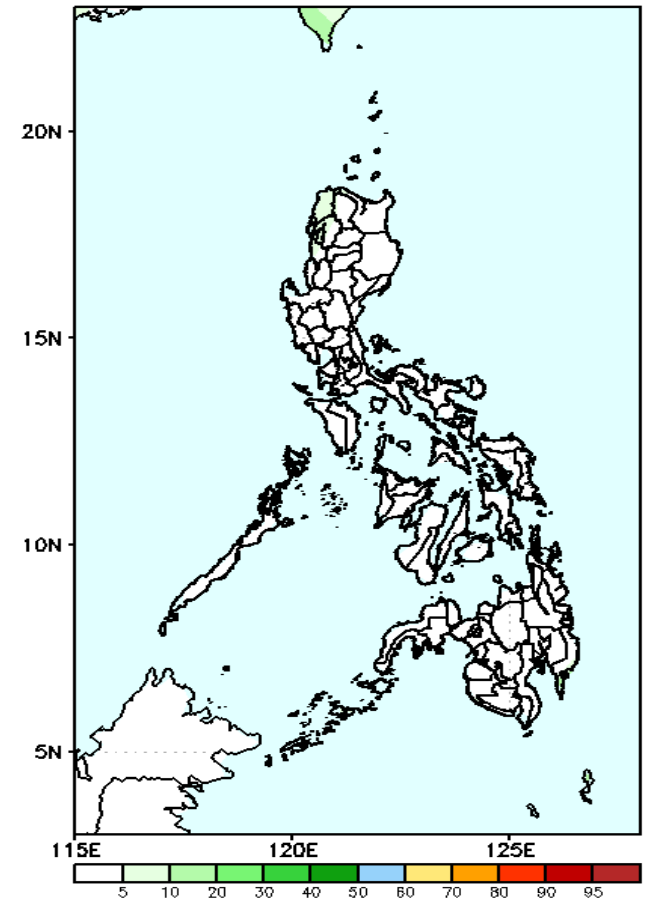
Low probability of rainfall to exceed 100mm in most parts of the country during the forecast period.

GEFS Week-2 Exceedance Prob. > 150mm
Valid: 20220829 - 20220904



Low probability of rainfall to exceed 150mm in most parts of the country during the forecast period.

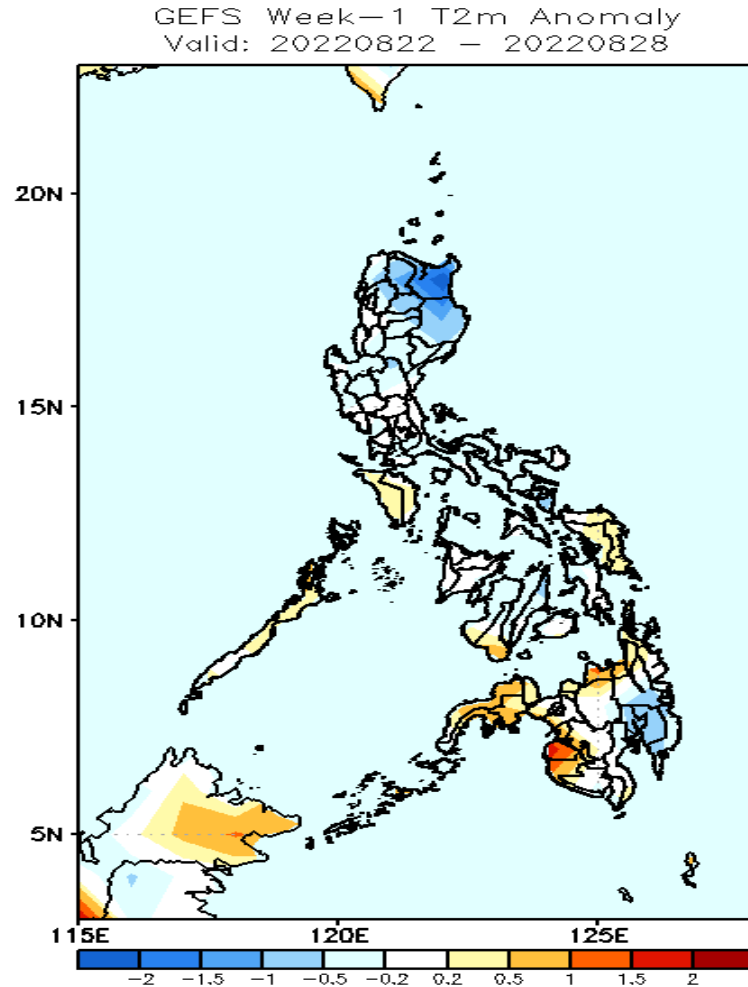
GEFS Week-2 Exceedance Prob. > 200mm
Valid: 20220829 - 20220904



Low probability of rainfall to exceed 200mm in most parts of the country during the forecast period.



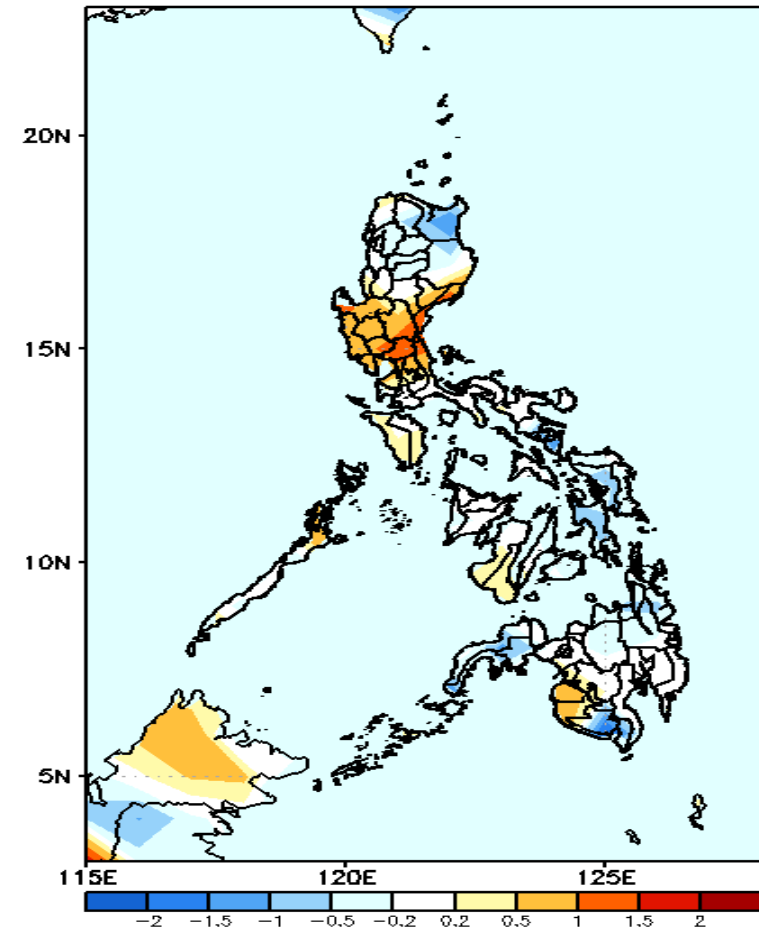
GEFS Week-1 & 2 Forecasts: T2m Anomaly



2m Temperature Week 1: Aug 22-28, 2022

Near to slightly cooler than average surface air temperature will likely experience in most parts of Luzon and Visayas, and Davao Region, (cooler in Cagayan) while slightly warmer to warmer than average temperature in Mindoro, Palawan, Eastern Visayas, Negros Oriental

GEFS Week-2 T2m Anomaly
Valid: 20220829 - 20220904



2m Temperature Week 2: Aug 29- Sep 04, 2022

Near to slightly cooler than average surface air temperature will likely experience in northern Luzon and most parts of Visayas and Mindanao while slightly warmer to warmer than average temperature in Central & Southern Luzon, Negros Island, Maguindanao and Sultan Kudarat during the forecast period.

